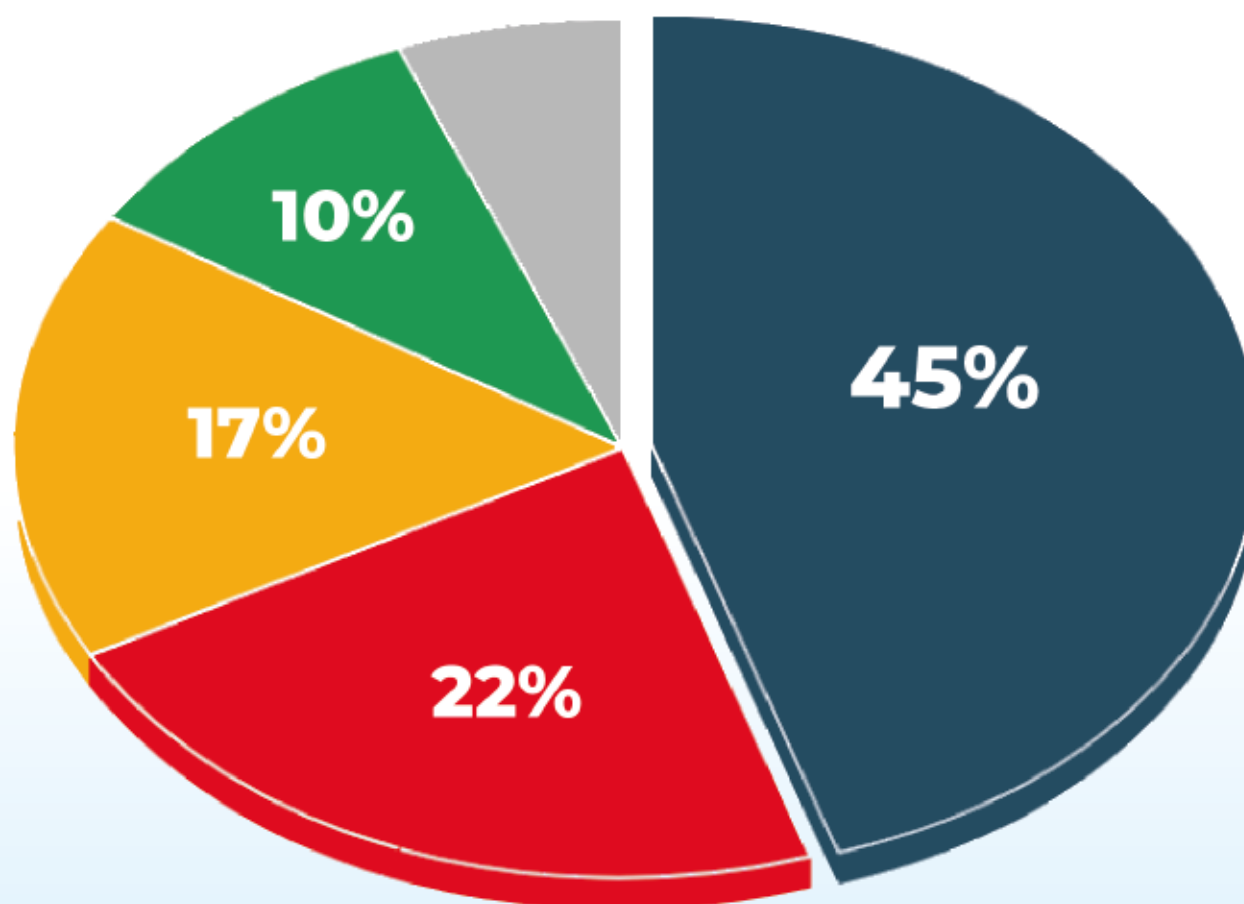


The background is a stylized, high-contrast illustration of a hand holding a ballot. The hand is rendered in dark brown and black tones, with highlights in yellow and orange. The ballot is a light blue rectangle. The overall style is graphic and textured.

# CITIZEN PERCEPTION ON STATE SUPPORT FOR POLITICAL PARTIES IN ELECTION PERIODS IN GHANA

*Source: Afrobarometer*

### Views on State Support for Political Parties



Strongly Disagree Disagree Strongly Agree Agree

Source: Afrobarometer

## Willingness to Pay Tax

Respondents who favour state support to political parties | by demographic group | 2022



Rural-



Men-



Urban-



Women-



18-35 years  
36-55 years  
≥ 56 years



Post-Secondary-  
Secondary-  
Primary-  
No formal Education-

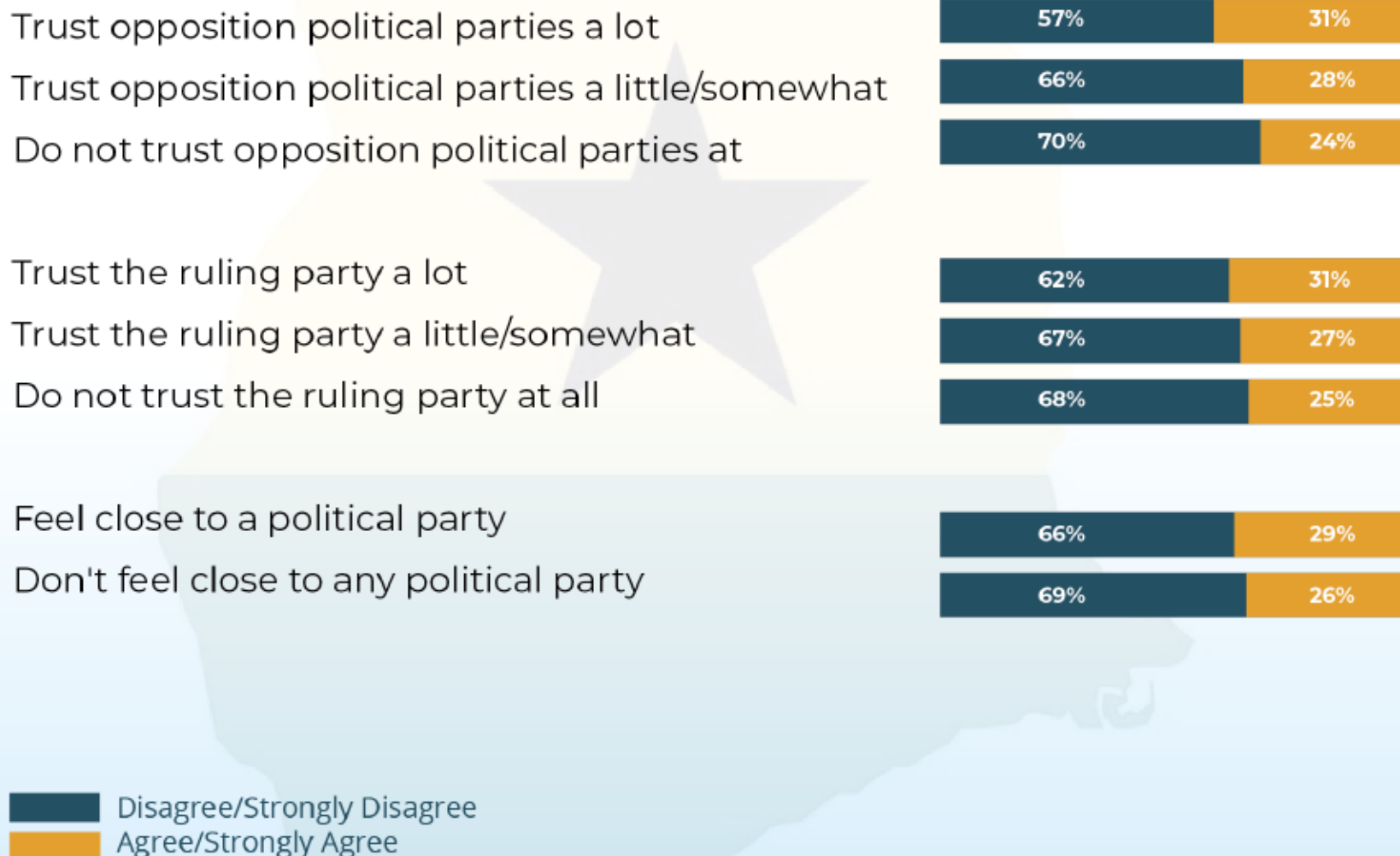


Agree/Strongly Agree  
 Disagree/Strongly Disagree

Source: Afrobarometer

# CITIZEN PERCEPTION ON STATE SUPPORT FOR POLITICAL PARTIES IN ELECTION PERIODS IN GHANA

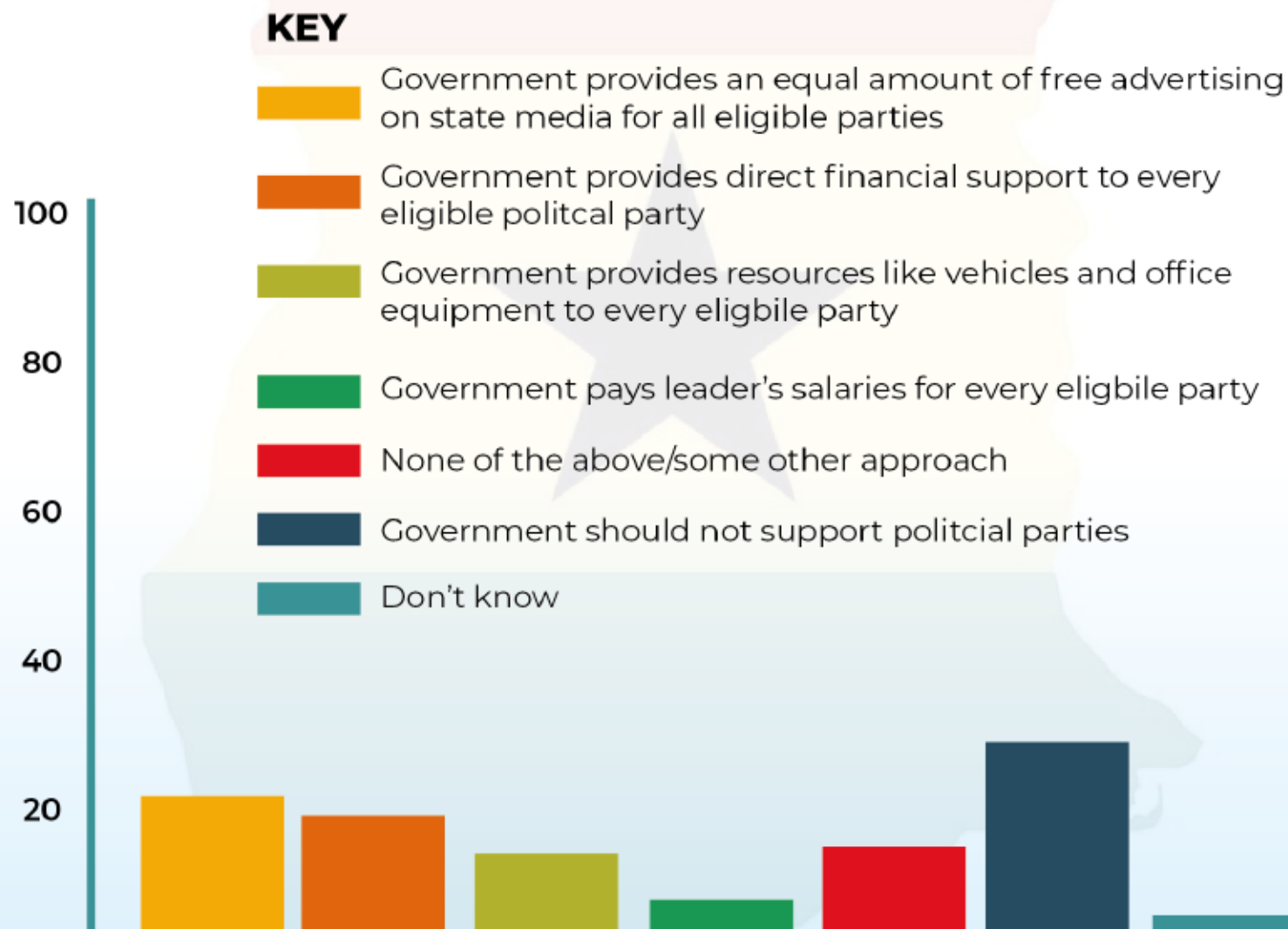
## State Support For Political Parties



Source: Afrobarometer

# CITIZEN PERCEPTION ON STATE SUPPORT FOR POLITICAL PARTIES IN ELECTION PERIODS IN GHANA

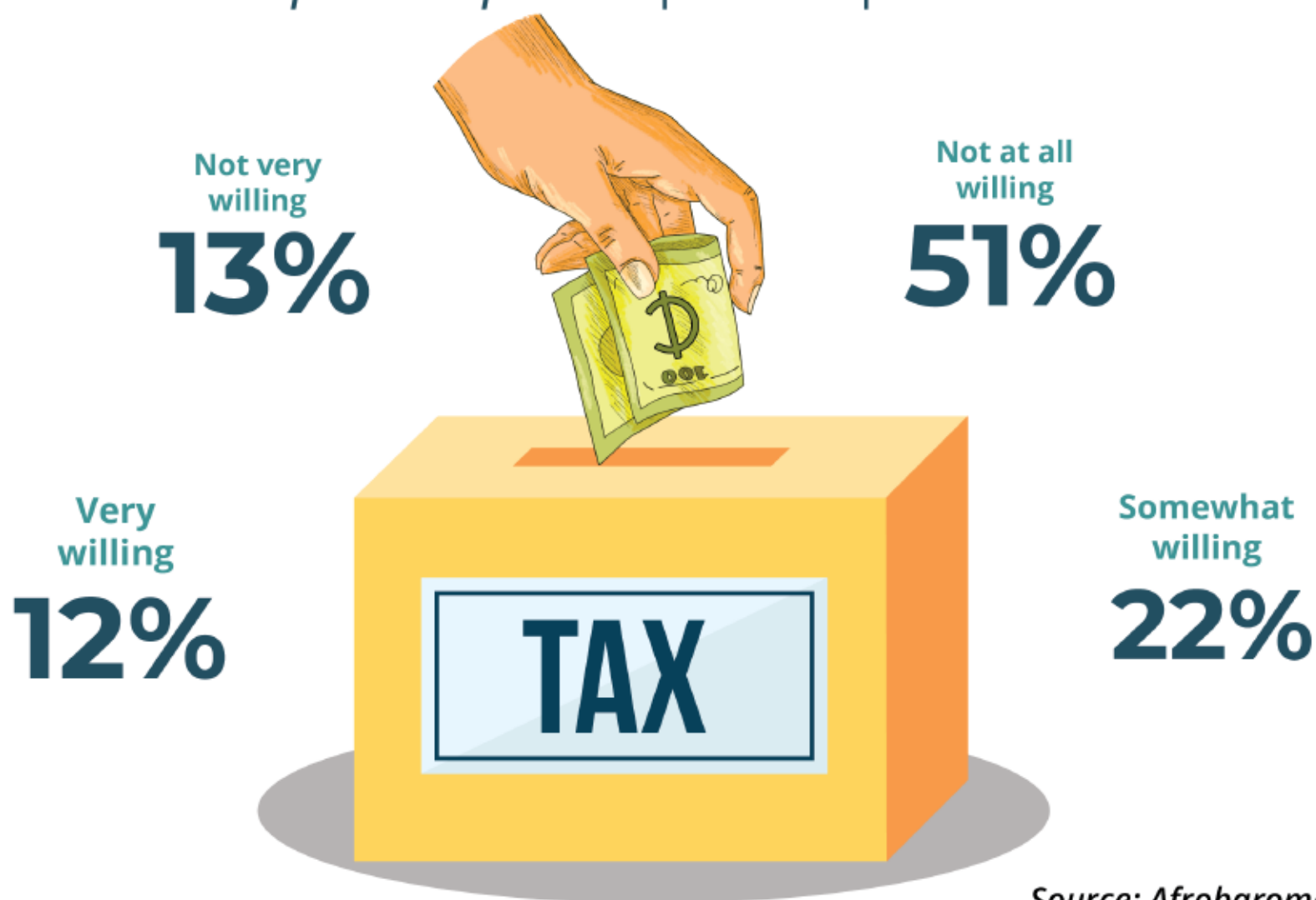
## Best Approach to Financing Political Parties



Source: Afrobarometer

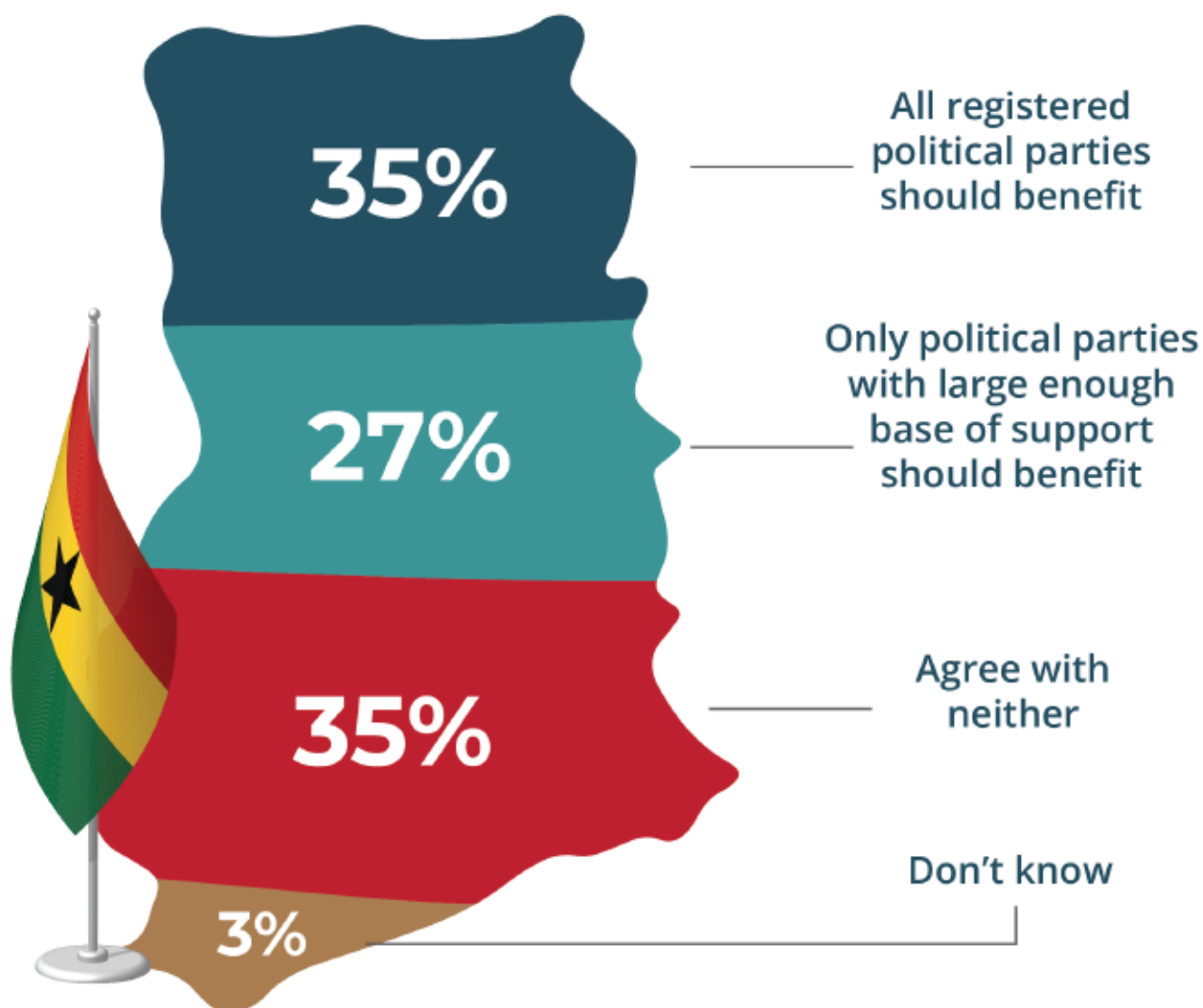
## Willingness to Pay Tax

*Respondents who favour state support  
to political parties | Ghana | 2022*



Source: Afrobarometer

## Criteria for State Support



Source: Afrobarometer

## Willingness to Pay Tax

*Respondents who favour state support to political parties | by demographic group | 2022*



Rural- **37%**



Men- **40%**



Urban- **32%**



Women- **30%**

56yrs and above

**29%**



18-35yrs  
**34%**

36-55yrs  
**38%**



Post-Secondary- **38%**

Secondary- **33%**

Primary- **35%**

No formal Education- **34%**

Source: Afrobarometer