



budgiti

GHANA

GHANA TINGBANI BUDGET 2026
DIN WUHIRI TINBIHI SOLI



20
26

**CITIZEN'S
BUDGET**

GHANA TINGBANI BUDGET 2026 DIN WUHIRI TINBIHI SOLI

BUDGET TAACHI:

ZOObU, TUMA NI BOMMA NI NYAMMA LAB MALI.

Ti sɔɔdi baɔsiri tinbihi ni bi baɔ salo arizichi ni yirina shem di ni dirili luyusheli,ni din tu ni yuuni gomnanti ka o tum kasi tuma.

N sabili

budgiti

GHANA





Budgit Ghana Yeltoya

BudgIT Ghana yela la civic technology tiɲa ni ka mali, ka nyeli ni kayibu yeltoya maa niriba, ka mali yeltoya ni tuma kuli sheli nyela ka nɲun suyu ni accountability di governance ni puuni. BudgIT Ghana ye pioneer ni social advocacy ni technology kaɲa yeltoya ni, ka be tuma teknoloji pam pam ka mali government budget ni public spending yeltoya ka pahi maa niriba ka be nyeli accountability ni good governance. Tiɲa la be nyeli tuma naahi ni ka booni Budget Access, Tracka, Extractives ni Institutional Support. Tiɲa la tuma sheli ye ka be hu data-mining skills pam pam, ka nyeli data maa niriba ka be nyeli paya government ka be nyeli service delivery ni governance ti ka suɲa.

Tuma Tingbani ni Diɲ' Sheli Director: Abiola Afolabi
Research ni Data Analysis Tuma Nyarɲali: Jennifer Addochoe Moffatt,
Hamid Abdel-Mumuni, Nancy Adzo Akpene Avevor
Data Tuhim ni Design Sheli Tuma Nyarɲali: Ayotomiwa Aje

Yili: Ghana 2026 Budget ni Economic Policy

Contact: budgitghana@budgit.org || +233 (0) 59 968 3045
Address: 10, Golf Hills Street, Achimota, Accra, Ghana
Website: <https://ghana.budgit.org/>
Facebook/Instagram/LinkedIn/Twitter/Youtube: @BudgITGhana

© 2026 Liabiliyu / Paya Yeltoyu:

BudgIT Ghana nyeli report nɲun ka maa niriba budget ni public data yeltoya puuni. BudgIT Ghana yela ka nyeli ti document nɲun ni yeltoya kuli ka booni ti analysis ni yeltoya pam pam, ka ti deemi ka yeltoya maa ni nyela ni ka booni fakta ni yeltoya maa.

Tiɲa la da nyeli care pam pam ka mali document nɲun, n-yela, BudgIT Ghana kaɲa di responsibility be liability hali ni errors be yeltoya ni ka booni document nɲun ni, be actions ni niriba nyeli ka booni report nɲun ni puuni.

Introduction

Gomnanti budget soŋdi maani tinbihi behugu. Bi wuhiri din tu ni gomnanti di layisheli niŋ karim, ashibitinima, palla, kom tuma, ni salo tayibu tuma.

Ghana 2026 Budget wuhiri gomnanti soya din maani bomma ni nyamma, kakpaŋsi tumanim palo yihibu, ka tum lebginsim tumanima ni salo tuma.

Tinbihi soli din jendi budget ŋɔ ni soŋ ka tinbihi ŋɔ baŋ gomnanti ni nyeri o liyiri Shem, di ni tu ni di di gomnanti liyiri Shem ni tinbihi ni yen tooi yuli gomnanti alekaulenima.

BudgIT kpaŋsiri kasi, vihigu, ni tinbihi pahigu salo layidili puuni. Lala soli baŋsiri salo ka bi yuuni di ni diri salo liyiri shem ka chen bohi tuunsuma zuyu tumbu

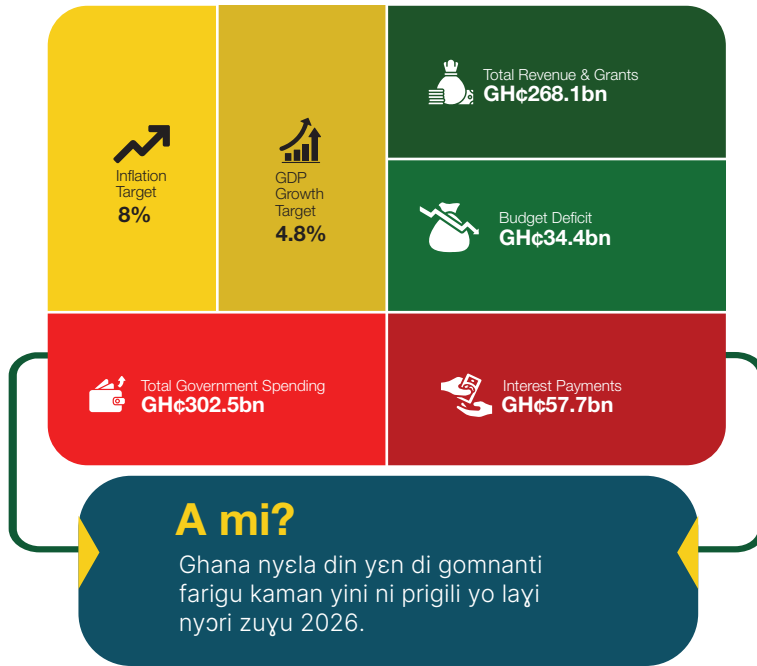
Bon Lɛɛ Nyɛ Gomnanti Budget?

Gomnanti budget nyɛla soshɛli din wuhiri gomnanti ni nyɛri o liyiri ka dirili shem yuuni pulini. O diri liyiri niŋɗi talahi tumanim kaman karim, alaafɛe ni tumaduri ka sɔŋɗi tinjbihi ka bi banɗi di ni zaŋɗi tingbani arizichi ni di binshɛli.



Tinjbihi ɗo yi pahi nyɛla binshɛli din kpaɗsiri kasi ni vɛnyɛlinga hali ka tuma ɗo ti naagi.

Ghana's 2026 Budget Ni Nye Shem



Ya Ka Lala Liyiri Nɔ Yen Yina?

YA KA GOMNANTI FARIGU YIRINA

Di tu ni gomnanti nye liyiri Ghc268.1 billion fariguni mini layipanda 2026 dundorɗi ni duyani. Lala liyiri nɔ pam yen yila farigu puunina.

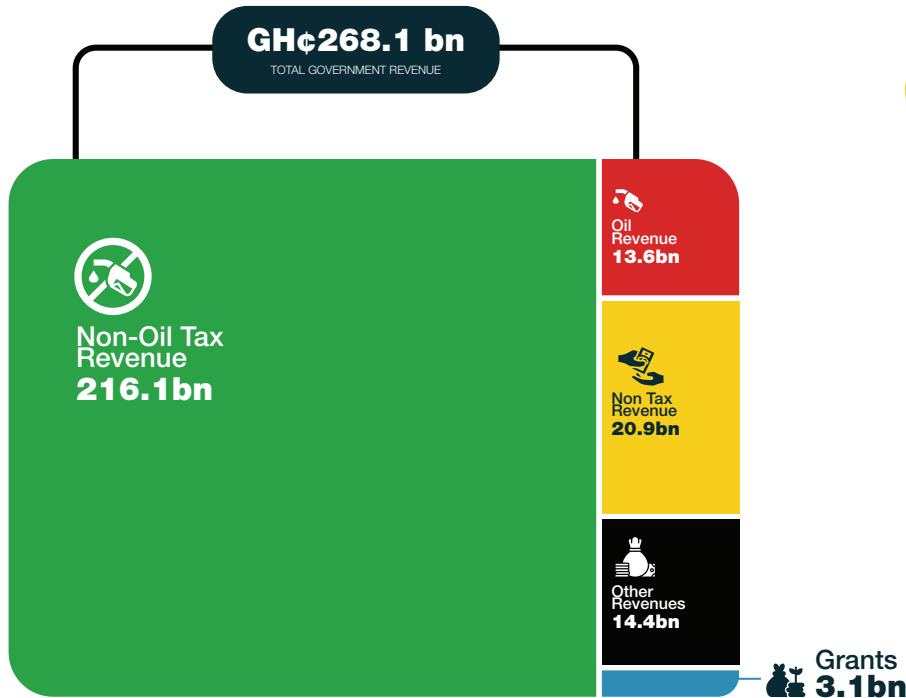
Fatigu sheli din pa kpm dini zahimya ni di paagi Ghc216.1 billion, din nye vaabu 80.6%. Layisheli din yen nye nɔ zaaha. Layisheli din pa farigu ka yirina binshɛɗa kaman fees ni charginima zahimdi ni di yihi liyiri Ghc20.9 billion ka oil and gas farigu ni yihi liyiri Ghc13.6 billion.

Farigu shɛɗa din pahi, nti pahi layishɛɗa din jendi National Health Insurance Levy (NHIL) ni Energy Sector Levy Layidili ɗpahiya gari layishaya di ni nyara (ESL) zahimdi ni di yihi liyiri Ghc14.4 billion layipanda din yi simnim sanina zahindi ni di yihi Ghc3.1 billion din nye vaabu 1.1% farigu ni layipanda nɔ zaa puuni. Lala liyiri nɔ ni sɔɗ tum gomnanti tuunikam din gbaagi gomnanti tumakam kaman karim, alaafee lebginsim tuma ni salo tayibu tuma.

Gomnanti liyiri ni layipanda 2026 zahimya ni di paagi ghc268.1 billion.

Ya Ka Lala Liyiri Njo Yen Yina?

YA KA GOMNANTI FARIGU YIRINA



**Ghana liyiri
vaabu gari 80%
nyela din yirina
farigu, di tu ni di
kpansi farigu
tuma ka dollies.**

Ya Kaa Farigu Liyiri Kuna?

GH¢302.5 billion

Gomnanti ni yen di layisheli 2026 yen yayisila Ghc302.5 billion. Di ni bori ni di sɔŋ ka tirbihi nɔ barɔ di ni diri liyiri nɔ shɛm, table sheli din do gbunni nɔ wuhiri gomnanti ghc100 kam ni diri shɛm.



? Gomnanti Ni Di **GH¢100** Kam Ni Chani Luyusheli



Spending Category	Per GH¢100
Public Sector Salaries	GH¢30
Interest Payments	GH¢19
Transfers to Government Institutions	GH¢21
Infrastructure and Capital Investment	GH¢19
Goods and Services	GH¢4
Debt Repayment	GH¢7

Yelikpana



GH 100 kam gomnanti ni di 2026, Kaman GH419 Kunila tiygbani sama yɔbu, ka Ghc19 ka ghc19 mi kpɛ lebginsim tumanimni kaman palla, karimzona ni ashbitinima.

Accountability Box

Sama yɔbu muyisigu

Ghc57.7 billion nyela layititali di ni zaŋ 2026 budget puuni yo sama. Layikara sheŋa di mali yori samaŋo nyela din boori layishaŋa din tu ni di zaŋ tum karim tuma, alaafee, ldbginsim tuma mini salo tumanima.



Bɔhisi din tu ni tinbihi bohi:

1
Wula ka gonnanti yuuni tingbani sama ŋɔ?

2
So dini ka di kpuyi ni di boogi sama ŋɔ?

3
Di zaŋ layipaŋda tum anfaani tuma?



Gonnanti Ni Yuuni Sheli 2026

2026 budget taachi nyela Resetting For Growth, Jobs and Economic Transformation. 2026, gonnanti niya nyela o mali ti bumma ni nyamma ka tumanim niŋ. Di kpaŋsiri 24_Hour Economy ni di yihi tumanim mini arizichi palo. Gonnanti lahi nyela ŋun kpaŋsiri karim tuunmaŋa tuma polo, ka kpaŋsiri alaafee ni salo tayibu tuma, nti pahi palla, digital systems nti pahi lebginsim tuunsheŋa. Gonnanti lahi mali niya ni o kpaŋsi pukparlim,ka bindira niŋ venyelinga ka zaŋ digital system kpaŋsi gonnanti tumaduri ka di tum venydinga.

2026 Budget Zuyu Yulibu



Ala Ka Gomnanti Yen Di 2026?

Gomnanti gbaaya ni o ni di GHC 302.5 billion din yayis 18.9% tingbani n̄ GDP. Ghc302.5 billion n̄ nyela din gbaagi ni gomnanti di layisheli, to amaa layidili kaman samli yobu ka di puuni.

Lala liyiri n̄ nyela layisheli gomnanti ni yen di 2026, nti pahi tumtumdiba compensation yobu, din yayisi Ghc90.8 billion, ka yo layinyori zuyu Ghc 57.7 billion, capital expenditure Ghc57.5 billion. layishen̄a din yen zaŋ tuma ni neema zuyu Ghc13.2 billion. Gomnanti tumaduri layipanda yayisila ghc63.6 billion. Sama yobu yayisila Ghc24.8 billion. Ka arrears mi yayisi Ghc29.8 billion.

Accountability Box

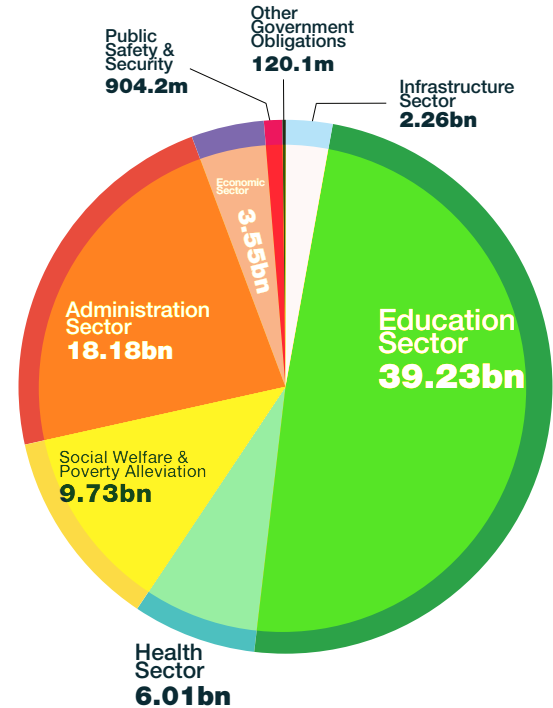
Karim Layidili



Gomnanti yihi Ghc4.2 billion ni di zaŋ niŋ free SHS ni Ghc1.1 billion ni di yihi double track system.

Tinbihi tu ka bi yuuni karimzona mebu thma, karimbanim behugu karim zonani, karim neema, ka yuli nye karim zona n̄ muŋibu n̄ nyela din baligi.

Tumaduri Ni Dirishem



Gomnanti Tuun Kpana 2026

Din boŋo nyela tuunshereŋa gomnanti ni mali niya ni o yina tum 20206 yuuni.



Karim

- Di yihi Ghc33.3 billion ti karim fukumsi thmayili ni bi tum bi tuma.
- Di yihi Ghc9.9 billion ti ksrin toto poŋ fukumsi tumayili (GETFund)
- Di yihi Ghc4.2 billion ni di tum free shs.
- Di yihi Ghc1.1 billion ti Ghana secondary Learning Improvement Programme (GSLIP) ni di zaŋ yihi double track system.
- Di yihi Ghc3 billion ti National Textbook expansion. 1 million KG karim, 2million primary school karim. 1 million JHS karim.



Alaafee

- Regional ashibiti palla ata regions palli sheŋa di ni kpala.
- Din naagi agenda 111 ashibitinin pia 2026.
- Din tuyi LA General ashibiti mebu tuma, Effia Nkwanta ashibiti, Komfo Anokye Maternity Block ni Ashanti regional ashibiti din be sewua.
- Din yeligi E - Health mini digital Health system.



Pala, Loorinima Ni Neema

- Accra - Kumasi 6 lane class A Expressway (198.7 km) pal karli malibu ni interchangenima anii malibu.
- Adawso - Ekye Amanfrom bridge ka di yi Afram plains.
- Di yihi ghc30 billion ni di zaŋ tum big push palla ni bridginim malibu tuma.



Kom Ni Sapta

- Din tuyi sekondi takoradi mini sunyani kom tumala.
- Din me yinsi banjeriti tuhipihita (30,000) ni salo banjeriti.
- Din yeligi GARID ko soli tuma odaw tinsi ŋani.



Paɣisara Ni Nachimba, Tuma Ni Feela Tumanima

- Din kpa 24 Hour Economy ni neema sambani yibu tuma ka tuma gari pihinu yina.(eg bobani tana behugu shee,agro industries behugu sheeneema shee)
- National Apprenticeship programme yeligibu=170 million).
- National codes programme,MSME soŋsim ni nuuni tuun banɗiba soŋsim yeligibu tuma.



Ziligi Pala

- Din mali 300 km Eastern Railway Line (Accra kuli Kumasi)
- Din yina dahim Tema - Mpakadan ziligi palli ka yooli Ka lab mali western Lind (Takoradi - Huni valley).
- Ka yina niŋ vihigu zaŋchar Trans - ECOWAS Railway ziligi palli malibu (Ghana zaŋ kuli Togo - Cote d'Ivoire)



Niyilimbuxim

- Di yina doli National LPG Promotion programme tumala tari cookstoves tingbani ŋo yilikam.
- Din naagi Kumasi AKSA. (350 mW) ni CENT (300 mw) gas fire plants ka di pilli tuma.
- Din da 10000 Smart Solar Palla zuyu buyim 2026.
- Ka yeligi niyilimbuxim tuma tingbani ŋo luɣulikam puuni.



Ya_ Gbera Ni Fondi Lebjisim

- Di ni naagi saglemi Housing project (phase1) ya gbera tusaa anii.
- Din tuyi affordable housing ya gbera tuhipia Accra, Ashanti,ni northern regions.
- Din yeligi rent to own scheme tuma ka nirba gari tuhipia di didaanfaani.



Buyibahili Ni Berisuŋ Tuma

- Din da offshore patrol vessels dibaayi.
- Din bo neema soŋ Ghana Air Force.
- Eu soŋsim tumanim Ghana ŋo.

Bozuyu Ka Gomnanti Dimma Gari O Nyamma?



Gomnanti ni gbaagi ni o di layisheli 2026 yuuni yayisila Ghc302.5 billion. Ka layisheli o ni nya ni layipanda zaaha bori ni di paagi Ghc268.1 billion, di wuhiya ni budget ho ni poogi Ghc34.4 billion, di wuhirimi ni gomnanti ni din yayi o ni yen nyeshem.

Budget layidili pooibu nyela din Hamish tingbana pam ni, banlee di yi niŋ ka gomnanti ku liyiri pam niŋ lebginsim tumanima mini bomma ni nyamma mali u. To amaa, lala laypooili ho layipandala puuni ka di yirina.

Wula Ka Gomnanti Yen Yo Laypooli Ho?

Di yi yen yobu 2026 budget layipooli ho, gomnanti yen zanlimi doli layipanda ho.

Dundohni laypanda yayisila Ghc71.0 billion, ka di yina gomnanti ni tiri securities kaman treasury bills ni bonds. tinduya liyiri yayisila ghc6.6 billion, di bi deegi liyiri ho pam nti pahi samshena di ni yori ho.

lala layipandili ho binkam jendila dundohni layipanda, binsheli gomnanti ni yuuni ni di soŋ gbubi duyani sama ho ka di ku kpe yoyu.

Accountability Box

Panbu Ni Samli



Ghana gbaaya ni di pan

GH¢71 bn

dundohni 2026

Tinbihi tu ni bi bohi:

1
Tuun din nim ka di zan layipanda ho tum?

2
Lala tjma ho yihiri anfaanina?

3
Gomnanti laypanbo ho baligira?

Wula Nye Laypanbo Ti Tinbihi Nɔ?

Liyiri panbu che ka gonnanti tumdi lebginsim tuma ka yuuni tingbani tumanim zuɣu, to amaa din gba mali yelmuyisira ti tinbihi nɔ.

Tuuli, samli nɔ pooibu kuli durimi. Samli nyosheli din yen yɔ 2026 yaɣisila GHC57.7 billion, din bɔnɔ nyela din yen kpuɣi gonnanti ni nyeri, layisheli nɔ pam.

Ka ni tooi boogi layisheli gonnanti ni yen zaɗ tum talahi tumanima. Din pahira, gonnanti ni tooi pahi farigunima bee ka o kpa farigu pala nbo soya yɔ layipanɗa nɔ, din bɔnɔ ni tooi tahi miisimna yinsi ni tumanimni.

Nta, dundɔŋni layipanbo nɔ yi galisi ni tooi boogi tumaduri layipanbo, dama Banknim yen borimi ni bi panɗi gonnanti treasury bills nɔ n gari dintoli tumaduri. Din bɔny ni tooi labsi dintoli kohima ni tuma yihibuna.

Din bahindi nyaanɗa, di yi kuli yun doli panɗi liyiri nɔ, banlee tinɗuyani loans ni tooi tahi muyisiguna tingbani nɔ liyiri zuɣu ka neensheɗa din kperina yɔbu pahi. Lala yela nɔ zuɣu, di niɗ talahi ni tinbihi nɔ ni tumaduri din yuuni nɔ, yuuni gonnanti ni panɗishem nɔ zuɣu ka di chen sɔŋ ka layisherɗa di ni pan nɔ tum anfaani tuma din yen sɔŋ kpanɗi bomma ni nyamma ni salo berisunɗ.



Lebginsim tuma pahimi zaɗkpa Big Push Programme tuma puuni, ka sama yɔbu gba kpanɗi.

Bon Lee Taxi 2025 Budget?

Category	2025 Budget	2026 Budget	What Changed?
Total Revenue & Grants	GH¢226.5bn (Proj.)	GH¢268.1bn	Farigu pahimi din pa Kpam farigu ni farigu so pala kpuyibu
Tax Revenue	GH¢186.6bn (Proj.)	GH¢223.9bn	Farigu kuli pahirimi ka kpanɔsi si tuma
Oil Revenue	GH¢10.0bn (Proj.)	GH¢13.6bn	Tuum tumbu, ka daa zani vengelinga
Total Expenditure	GH¢251.7bn (Proj.)	GH¢302.5bn	Ti pahiya pam ka di yi capital layidili ni salo tayibu tuma
Capital Expenditure	GH¢39.5bn (Proj.)	GH¢57.5bn	Daabiligim chan, tooni Big Push tuma ɔɔ ni mini 24- Hour Economy tuma ɔɔ ni
Interest Payments	GH¢40.0bn+ (Proj.)	GH¢57.7bn	Sama pam tobi dimini yihibu tuunsheli din tumdi ɔɔ
Primary Balance (Commitment)	1.8% surplus in 2025	1.5% surplus in 2026	Bimini bela zanɔɔɔɔ gomnanti ni yuumi tuma ɔɔ shem ɔɔ
Overall Deficit (Commitment)	1.8% of GDP in 2025	2.2% of GDP in 2026	Layidili yɔpahiya gari layishaya di ni nyara

Key Budget Risks For Citizens To Watch

1 Sama pahibu
Sama nyori zuɣu yobu nyela din yen tahi muɣisiguna budget zuɣu ka ni tooi boogi layisheli di ni yen zaɗ tum talahituma.

3 Infrastructure Implementation Risks
Lebginsim tumbu barina Tuunkambu tu ni di zaɗ kasi da neema ka yuuni tuma ɗo zuɣu ka di tumbu ku nin zinchili, ka liyiri ɗo kupahi ni aliguufu.

2 Farigu Derby
Gomnanti liyiri nyebu firing farigusheli di ni Deere mini Bim's ni nyamma zoobu. Di yi nigka dinboɗo bi nin, tuma tumbuninig wahala.

4 Tuma boyodin do behugu tumanimni
Liyiri yi ti bi wuhi ni tuma ni tum, tingbani yulimi tuma ɗo zuɣu, di nyela karim, alaafee tuma, ni kom tuma, liyiri tibu kpaɗsiri tuunmaɗa tumbu.

5 Layipaɗbo ni dahinsheli muɣisigu
Di yi paɗ liyiri pam zoɗo, din tooi boogi dahinsheli tuma budget ka kpaɗsi miisim tinbihi ɗo zuɣu zaɗkpa farigu polo ka liyiri danko du bee boogi salo thma.

Di yi paɗ liyiri pam zoɗo, din tooi boogi dahinsheli tuma budget ka kpaɗsi miisim tinbihi ɗo zuɣu zaɗkpa farigu polo ka liyiri danko du bee boogi salo thma.

BUDGET ALIKAULE SHEŊA DIN TU NI TINBIHI YULI

- Agenda 111 ashibitnim naaibu tuma.
- Accra - Kumasi Expressway palli malibu.
- Big Push lebginsim tuma thmbu.
- Double track system yihibu.
- Free SHS yeligibu tuma.
- 24 - Hour Economy Programme tuma tuma tumbu.
- National Apprenticeship Programme yeligibu tuma. Affordable housing project tuma.
- Kom tuma yeligibu tuma.
- Niylimbuɣim mini renewable energy tuma yelivibu.



Din boɗo nim zuɣu yulibu soɗdi yuuni ka gommanti layidili tahiri lebginsimna.



Bozuyu Ka Tingbihi Ni Tooi Yuli Budget

Salo arizichi nyela salo bini. Tingbihi di niŋ talahi ni bi yuli ka gonnanti layidili tahi anfaanina.

tracka

1 Yulimi Gonnanti Tumanim Zuyu

Zaŋmi BudgIT Tracka yuli tuunshɛɛa din tumdi a ya. Kaami www.yourtracka.org.gh bee kaa downloadi mobile app ɲo google play bee app store. Tingbihi ɲo ni tooi yaagi fotonima yuli tuma ni chani shem bi tinsini ka di soŋ kpaŋsi kasi tuma. An tooi lahi tracki lebgisim tumanim ka chen yuli nya di piliya, yihimi tuunshɛɛa din chen bahi bee niŋ di tumbu zinchili paloni ka chen yuli nya tuunshɛɛa din tum naagi ɲo tumdi tuma.

REPORT

4 Yihimi yelmuyisira paloni

A yi nya tuunsheli di ni chen bahi, di ni niŋ sheli zincheli, din bi tum venyelinga, bee tuunsheli din bi tumda, nyin doli BudgIT Tracka yihili paloni bee lahabali tumadu, csos, bee salo tumadu.

2 Bohimi bohigu ?

Paami tinsi ɲo kpamba, assemblynima, ministries ni tumaduri din niŋ talahi.

Bohimi bohisi kaman:

- **Yuuni dini ka di tum n ya?**
- **Ala ka di ti?**
- **Bo saha ka tuma ɲo yen naagi.?**
- **ɲun lee di tumbu?**

5 Share Budget Information

Che ka budget lahabali paagi sheba soŋ banŋi gonnanti ni bori liyiri ka dirili shem. Che ka nirba nya budget lahabali a tinsini, tuma shee, karimzonani, adiini durini ni social media zuyu.

3 Cham salo layingunimni

Pahimi tinsi layingunimni ni tinsi layingunimni din toyisiri budget tuma yeltoya.



6 Bohimi nasi tuma

Tingbihi bi tu ni bi mila numbɛrni ko, di tu ni bi bohi gonnanti layidili ɲo, kpaŋsim karimzona, ashibitinima, palla, kom tuma, tumanima ni bi behugu.



Accountability Box

Bo Ka Tinbihi Tu Ni Bi Bohi 2026

Tinbihi, lahabali sabriba, civil society organization tu ni bi bohi:



1

Tuunsheli di ni wuhi budget ḡo ni bi shiri tumli?



2

Yayi dini ka nimohi be yuuni puuni?



3

Salo contractorḡim ḡo tinsi kasi?



4

Liyiri ḡo Paarl tinsheḡa din bi hydro tuma ḡo?



5

Gomnanti ni paḡdi layisheli tumdi salo anfaani tuma?



6

Tinbihi ḡo nyeri lebginsim tuunshheḡa din tumdi ḡo?



BudgIT nyala ban mali niya ni bi kpaŋsi kasi ni salo layingunim pahibu, nti pahi salo kasi tuma Ghana gomnanti laydili polo.

Ti Dehitabli

Zaŋkpa tuunsheli kaman Tracks, tinbihi budget yulibu, data visualisation ni salo karimbu tumanima, BudgIT tiri tinbihi lahabali ni neensheŋa bi ni bori ni di soŋ ka salo arizichi tum venyeliga ka bye salo ni borisheli.

Tinbiso nun mi, di nyela din yen soŋ kpaŋsi kasi tuma. Di yi nin ka tinbihi yi ban budget, bi ni tooi bogies gomnanti soŋ tuma ka yuli ka salo liyiri ŋo tumti sokam

Glossary

Budget layipooli: Di yi nin ka gomnanti layidili gari gomnanti layi nyebo.

Capital Expenditure: Diri liyiri ninɗi tuunsheŋa din yuuri puuni, kaman palla, karimzona, ashibitinima, ni salo lebginsim tumanima.

Salli booibu: Layisheli di nimali yori sama nyori ni loans.

Revenue: Layisheli gomnanti ni dehiri farigu puuni.

Salo kasi tuma: Gomnanti tuma nyeli ni o banŋi ka wuhi salo gomnanti liyiri ni di Shem.

Your work as an Active Citizen just became easier

Download the Tracka Mobile App Now



GET IT ON
Google Play



Download on the
App Store

Net Allocations	
January 2020	GHC176,832,771.33
February 2020	GHC163,949,946.6
March 2020	GHC146,679,645.58
April 2020	GHC166,226,823.97
May 2020	GHC154,359,913.84
June 2020	GHC139,579,150.75
July 2020	GHC170,197,562.09
September 2020	GHC172,927,668.06



01

Track and Monitor
Constituency Projects
Domiciled in your State



03

Track Allocations to your
Regions, Municipalities,
Districts and Local Assemblies



02

Prompt your elected
representatives about
projects your
community needs



04

Contact your elected
representatives through
Tracka